



TG6 RANGE

Superior lift capacities,
high performance engines
and easy maintenance.



QUALITY THAT'S BUILT TO LAST

WWW.ISEKI.CO.UK

POWERFUL & COMPACT



With superior lift capacities from 1270kg right up to 1600kg the ISEKI TG6 range of compact tractors offers all you need to run all your implements without the need to increase the size or horsepower of your tractor compared to other manufacturers.

TG6 RANGE • Water-cooled 3 and 4 cylinder diesel engines with displacement of up to 2,434cc.

Features at a glance:

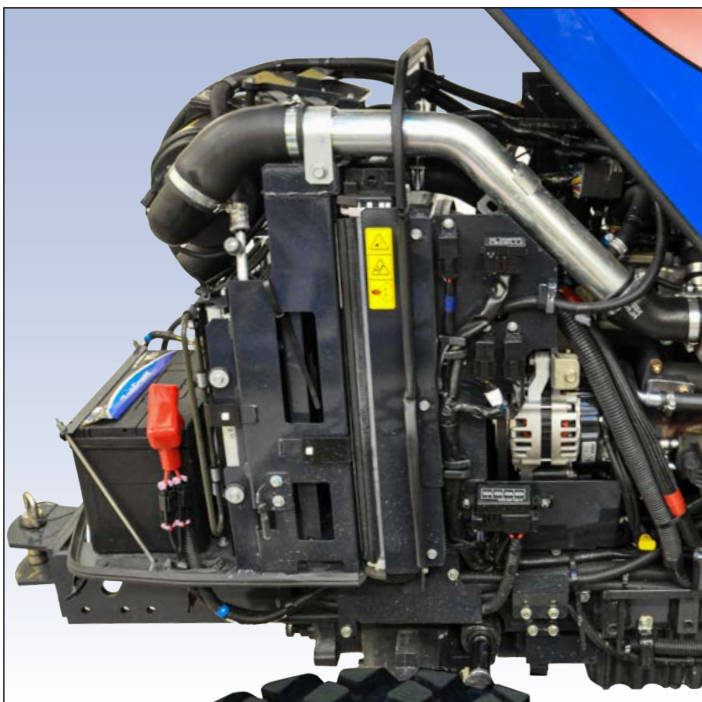
- Engine performance from 40 - 67 HP
- Hydrostat transmission with electro servo control
- IQ models with innovative IQ dual-clutch gearbox
- Intuitive operating controls
- Spacious cabin with excellent all-round view and driver comfort
- Loader joystick and valve fitted as standard
- Supplied with two double-acting auxillary valves

COMFORTABLE AND SPACIOUS CABIN



A spacious factory fitted cabin is available on all models. Fitted with air-conditioning as standard. All control elements are extremely clear and positioned in a readily accessible manner within the field of vision of the driver, reducing fatigue.

HIGH-PERFORMANCE ENGINES



Stage V Transition Engine

The new engines of the 40 to 67 HP class are characterised by reduced fuel consumption and extremely low pollutant emissions.

Maintenance made easy

The robust one-piece metal bonnet allows effortless access to the engine. Daily check items such as the dipstick can be accessed without opening the bonnet.

OPERATOR PLATFORM: INTUITIVE & CAREFULLY CONSIDERED



Colour-coded function switches on the left and right operator consoles differentiate the vehicle functions from the hydraulic functions.

- 1 Control unit for the drive
- 2 PTO control
- 3 Auxiliary hydraulic control lever, rear
- 4 Loader joystick with two functions (front/rear)



THE SPACIOUS OPERATOR PLATFORM IS THE BASIS FOR ALL-DAY PROFESSIONAL USE.

1 Foot pedal control:

Hydrostatic drive models use a comfortable 1-pedal foot control. Plenty of space around the pedal ensure easy control.

2 ISEKI electronic shuttle:

To swiftly change direction, the new TG 6 Series has a tried and tested, electronic shuttle shift, which is within easy reach next to the steering wheel.



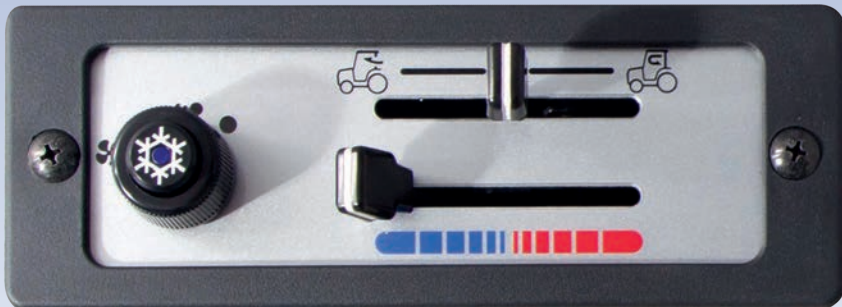
FOCUSED ON THE BENEFITS

The ergonomically designed cabin offers a comfortable operator environment.

Line-of-sight has been carefully considered to ensure safe and accurate operation of tractor mounted equipment.

Wide opening doors and steps mounted on both sides of the cabin ensure safe and easy operator ingress and egress.

AIR CONDITIONING AT THE REAR, BUT STILL WAY AHEAD...



The newly developed air-conditioning unit is installed at the rear of the cabin. This intelligent design ensures that the driver has the best overview of the front work area.

The cabin is Category 2 rated, providing protection against dust.



The stop position of the driver and passenger door has a variable adjustment. This restricts the air-ram assisted door opening in confined spaces.

EXCELLENT VI



CLEAR DASH LAYOUT

The display of the new TG6 Series has analogue and digital display readouts, informing the operator about tractor status.



VISIBILITY



VISIBILITY INCREASES SAFETY

Bright LEDs are easy to read - even in direct sunlight. Self-explanatory and easily understood pictograms provide the driver with comprehensive information. Ergonomically placed switches enable intuitive operation of the tractor. Diagnostic displays assist the driver in identifying faults in the event of a breakdown.

PASSION FOR DETAIL

Depending on the chosen model and its appropriate features, the modern dashboard indicates all essential information such as control displays for all-wheel drive, hand brake, PTO shaft speed, driving speed and the number of operating hours. Thus safety in daily use is also increased in addition to efficiency. Further control displays assist the driver in rapidly and correctly diagnosing faults in the event of a breakdown.

IQ GEARBOX

The powerful tractor series with innovative dual-clutch gearbox

THE EVOLUTION IN GEARBOX TECHNOLOGY

The new ISEKI IQ dual clutch gearbox combines comfortable automatic operation with the advantages of manual gear changes.

UNINTERRUPTED GEAR SHIFT

The new IQ dual clutch gearbox works on the principle of a direct shift gearbox, which consists of two gearboxes working in unison, offering the control of a manual with the convenience of an automatic. There are 8 main gears and 3 ranges. Gears are changed by simply moving the gear lever through the straight shift gate - no need to use the main clutch. If D is selected then gears 4 - 8 are operated automatically - ideal for road work or towing.

100% SMART

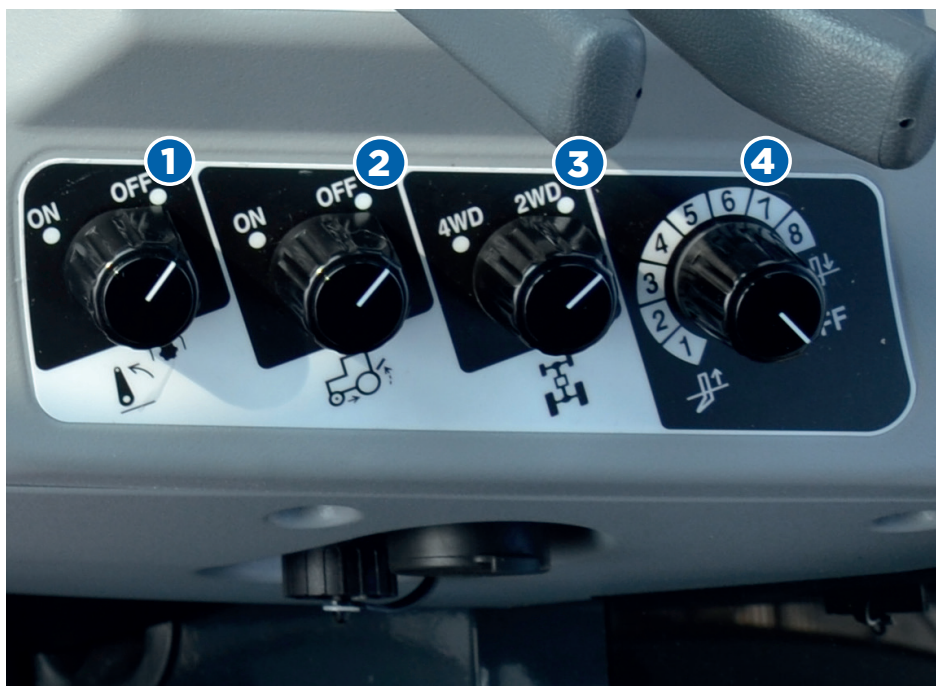
the ISEKI gearbox offers innovation with outstanding advantages:

- Maximum traction performance
- Automatic gear changes
- High driving speed up to 22 mph (36 km/h), depending on model
- Ergonomic design and intuitive controls for day-long operation



ELECTRONIC FUNCTION CONTROLS

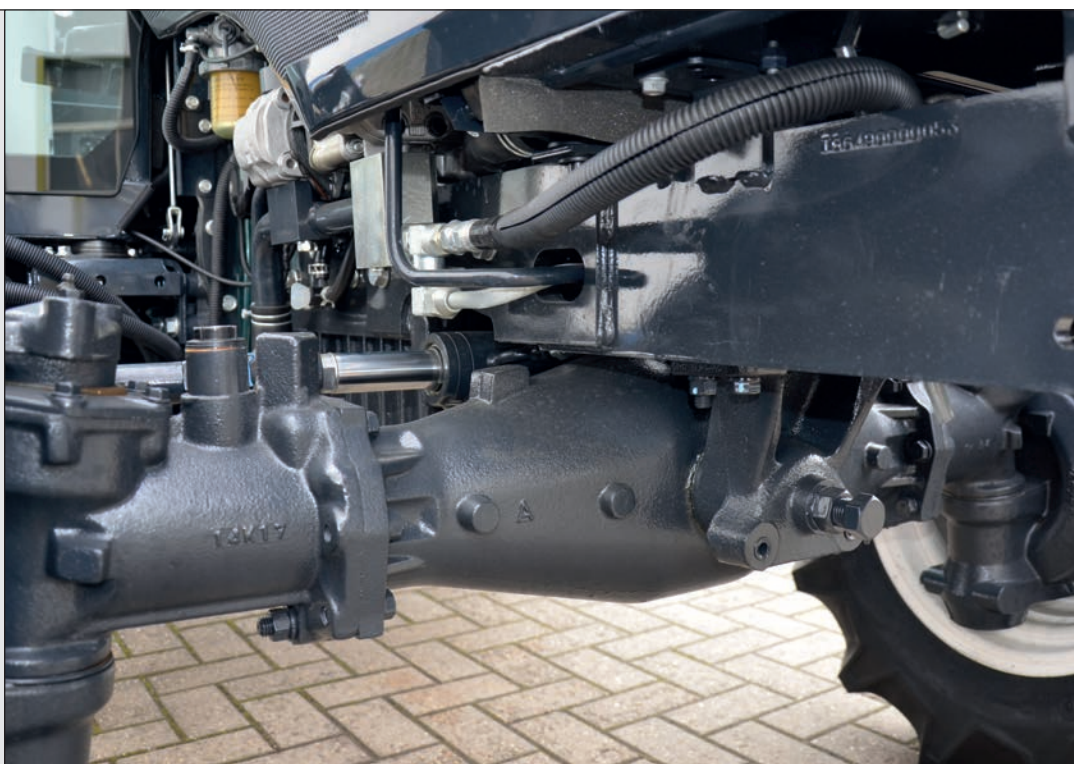
Specific to the TG407 IQ and TG6507 IQ you have the advanced headland management system with four controls in total.



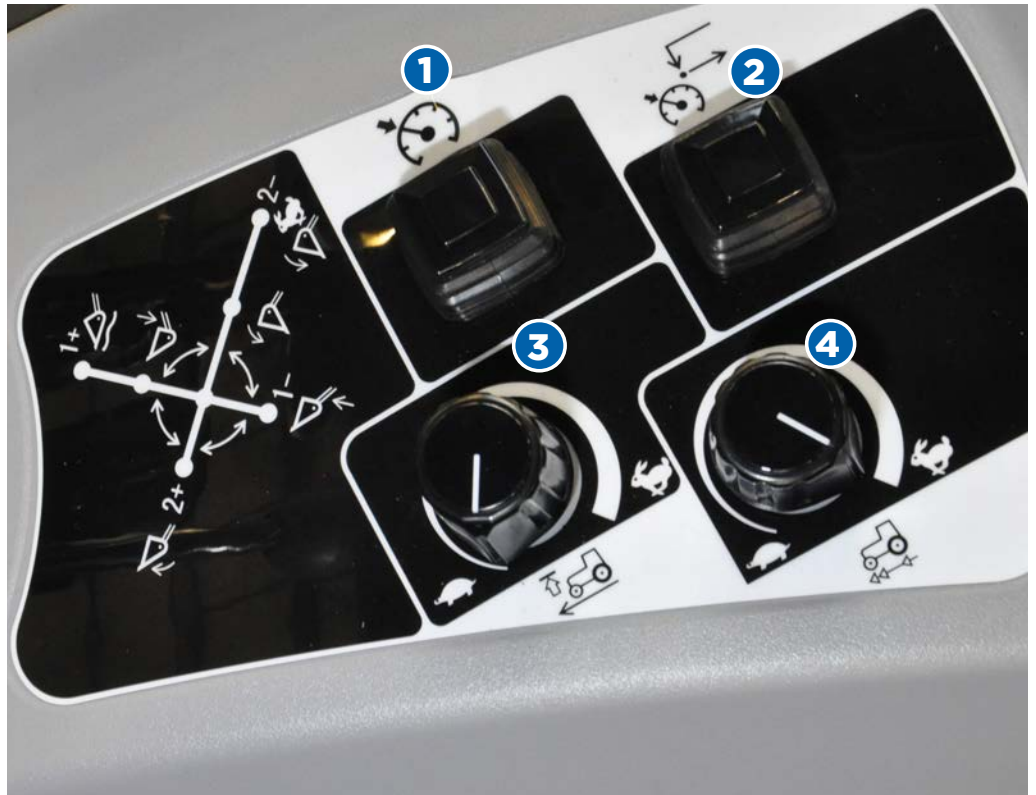
- 1** PTO Stop/Start function allows you to stop the PTO when raising the link arms for ease of operation.
- 2** PTO stop in reverse stops the PTO and lifts the arms to a pre-set height if reverse gear is selected to prevent possible damage to the implements. The height of link arms can be adjusted to suit the task.
- 3** Four wheel drive activation.
- 4** Electronic draft control.

STABLE AND RELIABLE

The robust axles are designed to maintain reliability even under extreme loads.



TG6 HST CONTROLS



1 Cruise Control

Once the working speed is achieved the cruise control can be set to remain a constant speed even if the HST pedal is released. Perfect for a variety of turf maintenance implements where accuracy is required.

2 Memory/ Resume

When working the tractor on cruise control you can cancel the speed by depressing the brake whilst maneuvering, pressing the Cruise memory function allows the previously set speed to be resumed.

3 Speed Control

To keep operators and the working environment safe the maximum achievable speed can be set to limit revs when the HST pedal is fully depressed.

4 Response Control

This function allows the hydrostat to be adjusted to suit the job in hand, whether it is fast loader work or slow moving warehouse or stock movement.



TECHNICAL FEATURES

The rear LED work lights are impact-protected and are positioned in the cabin roof area in the standard version.

Rear windscreen wiper supplied as standard on all cabin models

Left and right opening side windows give good all-round view and ventilation.

3-point hitch:
Lifting power of up to 1.6 tonnes on the rear hitch at ball ends.

Drawbar is standard equipment.



Impact-protected road lights.

Heated rear window for clear visibility whatever the weather that can also open for added ventilation.

The rear PTO shaft operates independently and can be switched between 540 and 750 RPM from the cabin on the HST and PS models. IQ models: 540/750/1000 RPM.

Hook-end CAT1 linkage (CAT 2 linkage available on the TG6687 PS model)

All Iseki tractors are constructed using robust, high quality components.

Quality that's built to last.



LOADERS

Designed and built for longevity the **MX Loaders** are available as options for the TG6 Range



- **C3/C3+ loaders are suitable for the TG6407.**
- **C4/C4+ loaders are suitable for the TG6507, TG6557 & TG6687 models.**

C3 and C4 models are standard whilst the C3+ and C4+ loaders have mechanical self-leveling. All versions have drive-in quick attachments to the tractor for ease of use and quick attachment of implements.



ATTACHMENTS INCLUDE:

- General Purpose Bucket
- Bucket with Grab
- 4-in-1 Bucket
- Manure Fork with or without grab
- Pallet forks
- Third Function options and counter weights.

TG6 Range - AT A GLANCE

TG6407 IQ



The TG6407 IQ features an ISEKI Stage V, 3 cylinder 40hp diesel engine with IQ Dual-Clutch transmission F24/R24 that offers the control of a manual with the convenience of an automatic. There are 8 clutchless speeds and 3 ranges. Gears are changed by simply moving the gear lever through the straight shift gate. If 'D' is selected then gears 4-8 are operated automatically - ideal for roadwork or

towing. TG6407 IQ is available with ROPS or an air-conditioned Category 2 cab.

A front loader joystick, draft control, up stop PTO and linkage lift in reverse are all supplied as standard. The tractors are offered with either Ag or Turf tyres as standard. Optional loaders, either standard or with parallel lift are available.

TG6507 IQ / HST



The TG6507 49hp turbo diesel is available with IQ or HST transmission. The HST features the 2-stage servo hydrostat transmission offering three speeds with high and low ranges.

It has an electronic shuttle lever plus controls for maximum speed, hydrostat response and cruise control with a resume speed memory function.

The TG6507 with Dual-clutch IQ gearbox has F24/R24, an automatic option and finger-tip shuttle control. The updated air-conditioned category 2 cab has increased visibility for the operator. A front loader joystick and mid-mounted outlets are standard. Turf or Ag tyres available alongside an optional front loader.

TG6557 PS



The TG6557 PS tractor is available with a factory fitted, fully air-conditioned category 2 cabin. It features a 55hp four cylinder, Stage V diesel engine, with a F12/R12 power-shuttle transmission.

The rear, category 1, 3-point linkage has a capacity of 1,600kg at ball end and 1,500kg at 24 inches.

Draft control, two auxiliary valves and a front loader joystick are all as standard. The rear PTO is 2-speed with a mounted switch for stationary use and a 2,000rpm mid PTO. An optional front loader is available. It is supplied with either Turf or Ag tyres.

TG6687 HST / PS



The TG6675 features a 67hp four cylinder, Stage V diesel engine and is available with HST or Power Shuttle transmission. This compact tractor is available with a factory fitted, fully air-conditioned category 2 cabin as standard.

The PS has a F12/R12 power-shuttle transmission and HST has a 3 range transmission with Hi/Lo selection (F6/R6), response and cruise control.

The rear category 1 or 2, 3-point linkage has a capacity of 1,600kg at ball end, 1,500kg 24" behind on the TG6687 PS and 1,580kg at ball end, 1,400kg 24" behind on the TG6687 HST.

The rear PTO is 2-speed with a mid PTO also included. An optional front loader is available. It is supplied with either Turf or Ag tyres.

TG6 Range - Technical Specifications

MODEL		TG6687 PS	TG6557 PS	TG6687 HST
ENGINE				
Model		E4FH-TIDEB/01	E4FH-TDEB04	E4FH-TIDEB02
Engine output Gross (kW){HP}		49.0kW {67hp}	40.0kW {55hp}	49.0kW {67hp}
Number of cylinder		4	4	4
Displacement (L)		2.434	2.434	2.434
Rated engine speed (min-1)		2600	2600	2600
Fuel tank capacity (L)		53	53	53
TRANSMISSION				
Main clutch		Wet multi plate	Dry single plate	-
Transmission	Main	4	4	HST 2 stage servo
	Sub	3	3	3x2(Hi-Lo)
Number of speed		F12/R12	F12/R12	F6/R6
Auto accelerator		NA	NA	Std.
Cruise control		NA	NA	Std.
PTO				
Clutch		Independent (2 modes)+ Auto	Independent (2 modes)+ Auto	Independent (2 modes)+ Auto
Mid PTO		Std. (cab) Opt. (ROPS)	Std.	Std.
	Number of Gear	1	1	1
	Speeds (min-1)	2,000	2,000	2,000
Rear PTO	Number of Gear	2	2	2
	Speeds (min-1)	2,000	2,000	540/750
Stationary PTO		Std.	Std.	Std.
REAR AXLE				
Brake		Wet disc	Wet disc	Wet disc
Brake Pedal Type		Two pedals	Two pedals	Two pedals
Diff-lock		Std.	Std.	Std.
FRONT AXLE				
Type		4WD/2WD	4WD/2WD	4WD/2WD
Steering		Power steering	Power steering	Power steering
Tilt Steering		Std.	Std.	Std.
HYDRAULICS				
3P lift cap (kg)	@ link end	1,600	1,580	1,580
	@24inch behind	1,500	1,400	1,400
Pump capacity (L/min)		48	47.8	47.8
Position control		Std.	Std.	Std.
Draft control		Std.	Std.	NA
Aux. Valve		2 banks	2 banks	2 banks
3P				
Joystick valve		Std.	Std.	Std.
3P linkage	Category	2 Opt.: 1	1	1
	Lift Rod (RH)	Turn buckle	Turn buckle	Turn buckle
	Check chain	Turn buckle	Turn buckle	Turn buckle
	Lower link end	Hook end	Hook end	Hook end
Rear Hitch		Clevis drawbar	Clevis drawbar	Clevis drawbar
ELECTRIC				
Combination Switch		Column type	Column type	Column type
Beacon lamp switch		Std.	Std.	Std.
Digital Panel		Std.	Std.	Std.
CABIN				
Air conditioning & Heating		Supplied with Cabin	Supplied with Cabin	Supplied with Cabin only
ROPS				
		Supplied with Rear ROPS	Supplied with Rear ROPS	Not Available with ROPS
DIMENSIONS				
Overall length (mm)		3,550 (Cab) 3,570 (ROPS)	3,435	3,435
Overall width (mm)		1,725	1,725	1,725
Overall height (mm)		2,245 (Cab) 2,540 (ROPS)	2,250	2,250
Wheel base (mm)		1,990	1,930	1,930
Minimum ground clearance (mm)		185	240	240
Weight (kg)		2,125 (Cab) 1,960 (ROPS)	2,045	2,070
Min. Ground clearance with Std Turf Tyres		190mm	245mm	245mm
Min. Ground clearance with Std Ag tyres		280mm	335mm	335mm

TG6 Range - Technical Specifications

MODEL		TG6507 HST	TG6507 IQ	TG6407 IQ
ENGINE				
Model		E4FH-TDEB03	E4FH-TDEB01	E3FH-TDEB07
Engine output Gross (kW){HP}		36.0kW {49hp}	36.0kW {49hp}	29.4kW {40hp}
Number of cylinder		4	4	3
Displacement (L)		2.434	2.434	1.826
Rated engine speed (min-1)		2600	2600	2600
Fuel tank capacity (L)		53	53	40
TRANSMISSION				
Main clutch		-	Wet disk	Wet disk
Transmission	Main	HST 2 stage servo	8	8
	Sub	3x2(Hi-Lo)	3	3
Number of speed		F6/R6	F24/R24	F24/R24
Auto accelerator		Std.	Std.	Std.
Cruise control		Std.	Std.	Std.
PTO				
Clutch		Independent (2 modes)+ Auto	Independent (2 modes)+ Auto	Independent (2 modes)+ Auto
Mid PTO		Std.	Std.	Std.
	Number of Gear	1	3	3
	Speeds (min-1)	2,000	1,000/1,500/2,000	1,000/1,500/2,000
Rear PTO	Number of Gear	2	3	3
	Speeds (min-1)	540/750	540/750/1000	540/750/1000
Stationary PTO		Std.	Std.	Std.
REAR AXLE				
Brake		Wet disc	Wet disc	Wet disc
Brake Pedal Type		Two pedals	Two pedals	Two pedals
Diff-lock		Std.	Std.	Std.
FRONT AXLE				
Type		4WD/2WD	4WD/2WD	4WD/2WD
Steering		Power steering	Power steering	Power steering
Tilt Steering		Std.	Std.	Std.
HYDRAULICS				
3P lift cap (kg)	@ link end	1,580	1,580	1,270
	@24inch behind	1,400	1,400	1,150
Pump capacity (L/min)		47.8	36.5	28.8
Position control		Std.	Std.	Std.
Draft control		NA	NA	NA
Aux. Valve		2 banks	2 banks	2 banks
3P				
Joystick valve		Std.	Std.	Std.
3P linkage	Category	1	1	1
	Lift Rod (RH)	Turn buckle	Turn buckle	Turn buckle
	Check chain	Turn buckle	Turn buckle	Turn buckle
	Lower link end	Hook end	Hook end	Hook end
Rear Hitch		Clevis drawbar	Clevis drawbar	Clevis drawbar
ELECTRIC				
Combination Switch		Column type	Column type	Column type
Beacon lamp switch		Std.	Std.	Std.
Digital Panel		Std.	Std.	Std.
CABIN				
Air conditioning & Heating		Supplied with Cabin only	Supplied with Cabin only	Supplied with Cabin
ROPS				
		Not Available with ROPS	Not Available with ROPS	Supplied with ROPS
DIMENSIONS				
Overall length (mm)		3,435	3,470	3,130
Overall width (mm)		1,725	1,725	1,465
Overall height (mm)		2,250	2,250	2,600 (ROPS) 2,220 (Cab)
Wheel base (mm)		1,930	1,965	1,720
Minimum ground clearance (mm)		240	240	265
Weight (kg)		2,050	2,120	1,605 (ROPS) 1,780 (Cab)
Min. Ground clearance with Std Turf Tyres		245mm	245mm	285mm
Min. Ground clearance with Std Ag tyres		335mm	335mm	350mm

NOTE: Specifications, while correct at time of printing, may change without notice.



TG6 RANGE

Don't just take our word for it.

Try an ISEKI tractor for yourself and book a demonstration with your local dealer.

**Contact us today
01473 599266**



QUALITY THAT'S BUILT TO LAST

WWW.ISEKI.CO.UK

